

How to Upgrade ECUHELP KT200 to KT200II 2026?

This guide will show you how to upgrade your ECUHELP KT200 (1st Generation) to KT200II 2026 Version, including both hardware installation and software update.

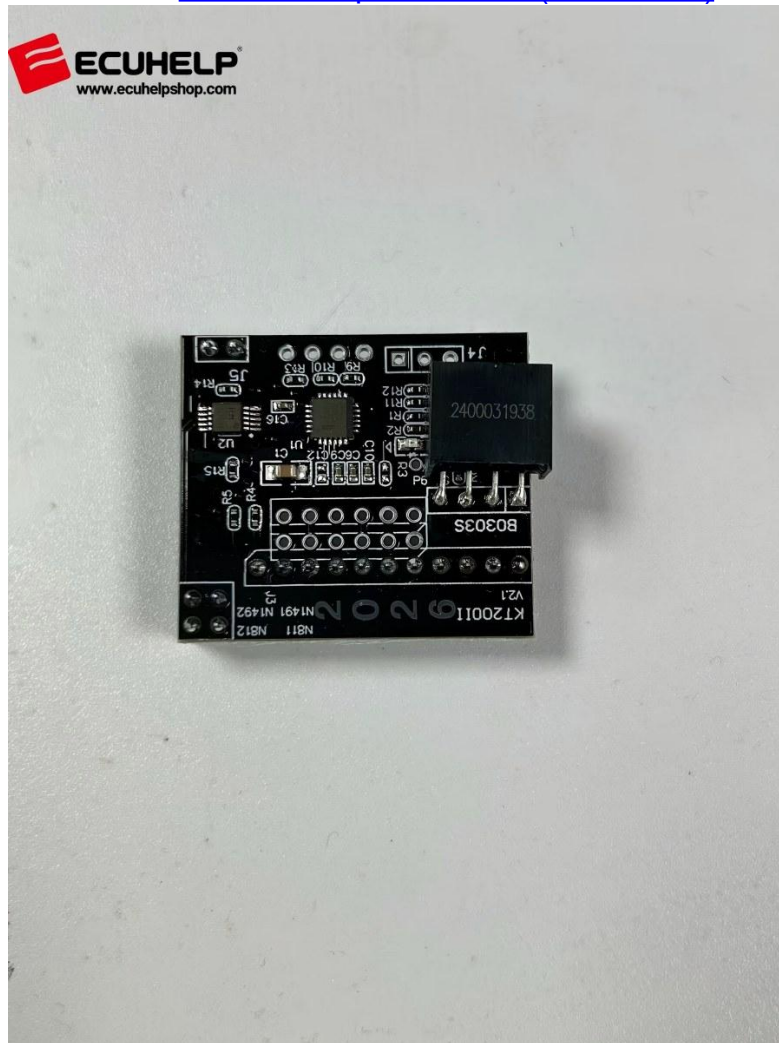
Preparation:

1. ECUHELP KT200II or KT200 1st generation



first you have to have the hardware
KT200II

2. Order the [2026 New Update Board \(Small PCB\)](#)



Step-by-Step Upgrade Guide:

Step 1. Open the KT200 shell

Step 2. Take out the small PCB from the main board of the hardware.



Now we take out the small PCB
from the main board of hardware

Step 3. Insert the PCB to the KT200 V1 hardware and update the software.

A. Take this jumper into the back of the small pcb, and the other jumper into the JP one of this position (shown in the following images). Now we insert this PCB into the main board.

take this jumper into the back of the
small PCB





now we insert this PCB



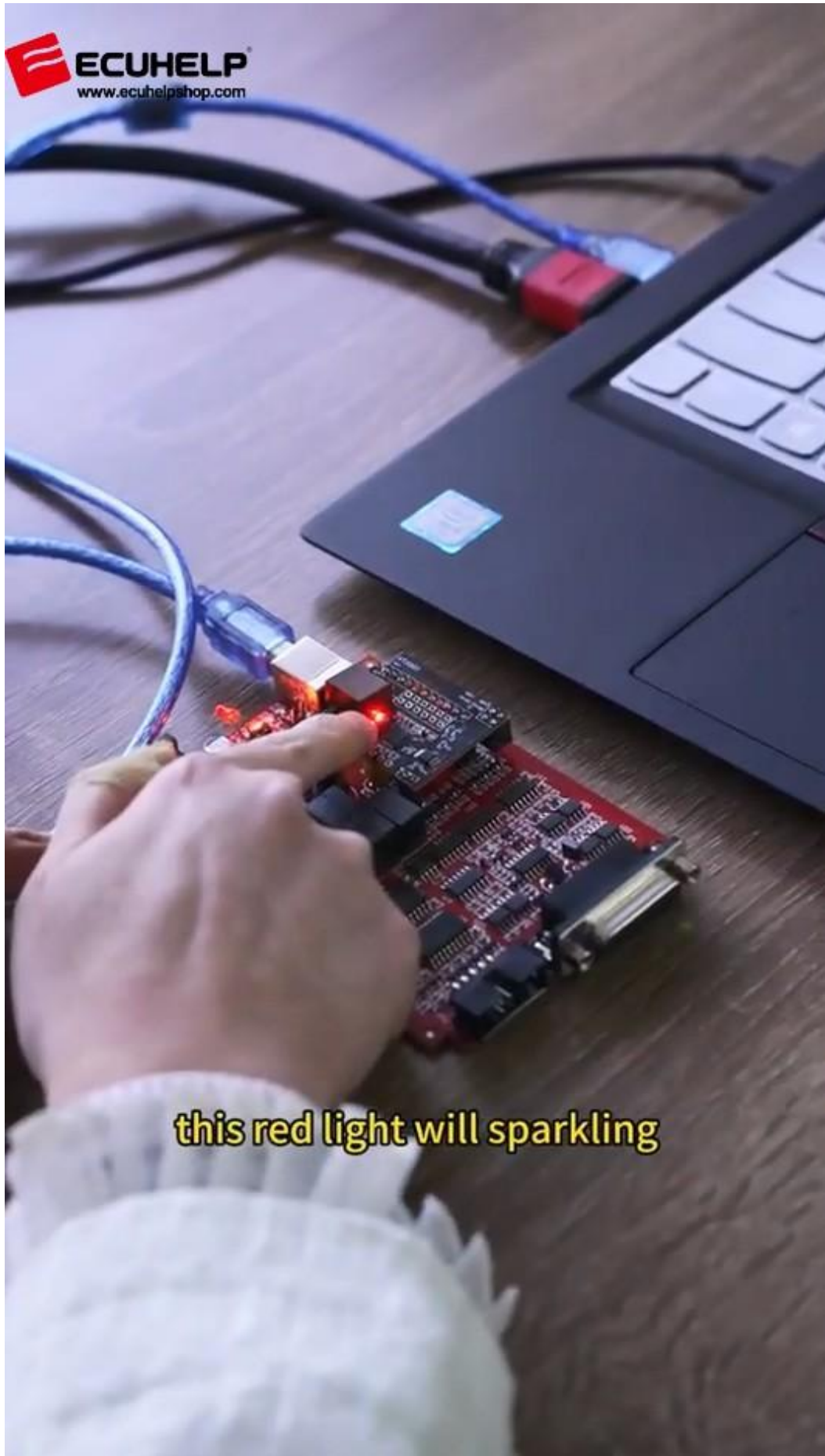
finished this step

B.Log into the computer.

The red light will spark, after it stops sparking, we need to update the firmware.

we need to plug into the computer



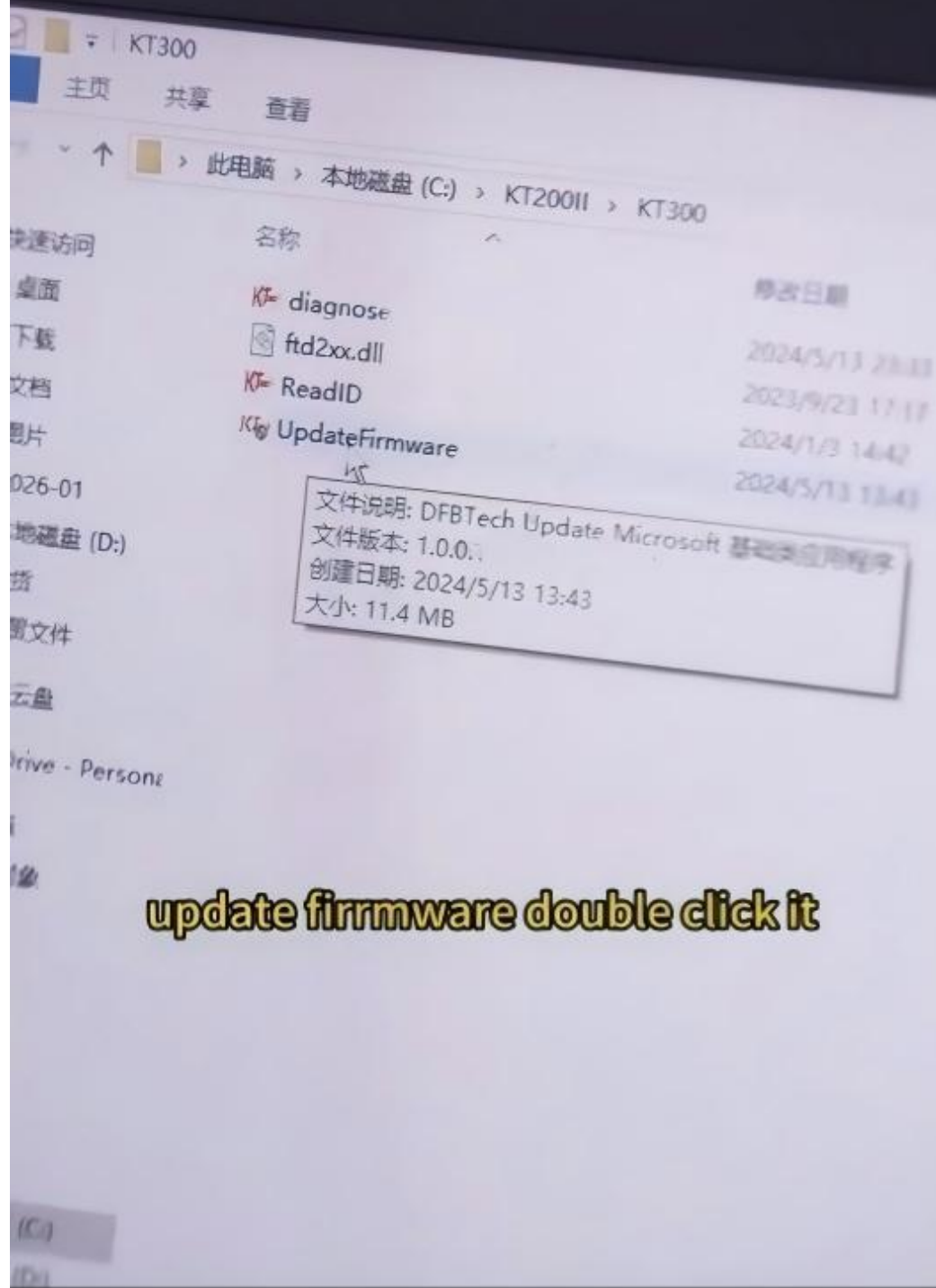


this red light will sparkling

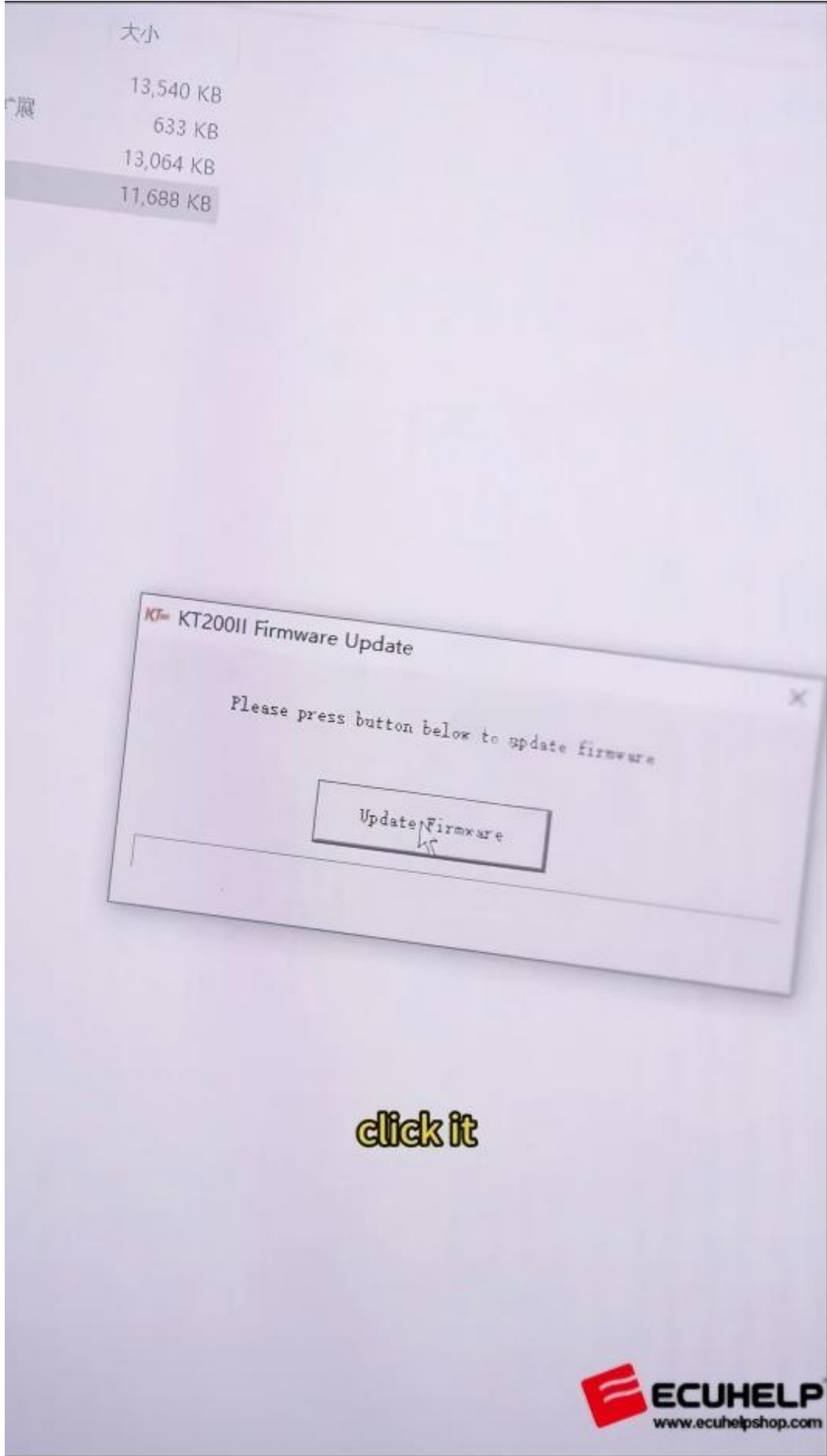
Now open the Disk C folder

Click on "KT200" ->"KT300"-> "UpdateFirmware" -> "Yes" -"Update Firmware"

-> "OK", now update firmware successfully.



update firmware double click it



大小
13,540 KB
633 KB
13,064 KB
11,688 KB

KT200II Firmware Update

Please press button below to update firmware

Update Firmware

click it

13,540 KB

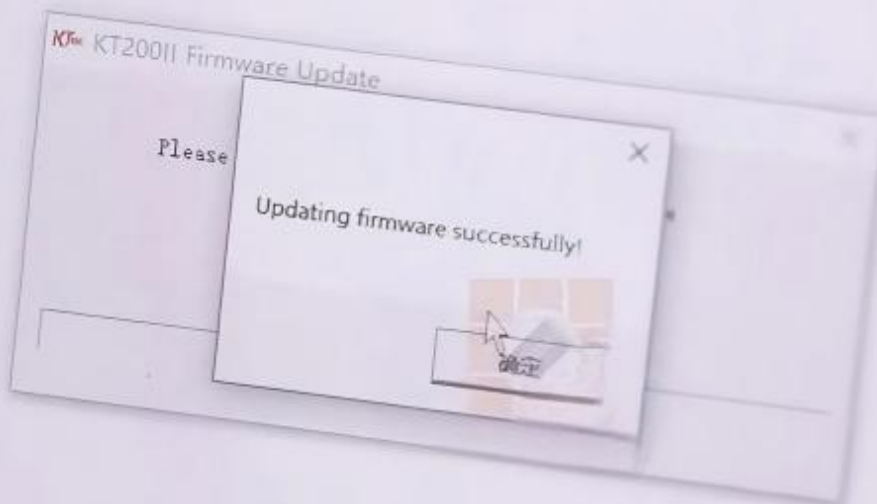
633 KB

13,064 KB

11,688 KB



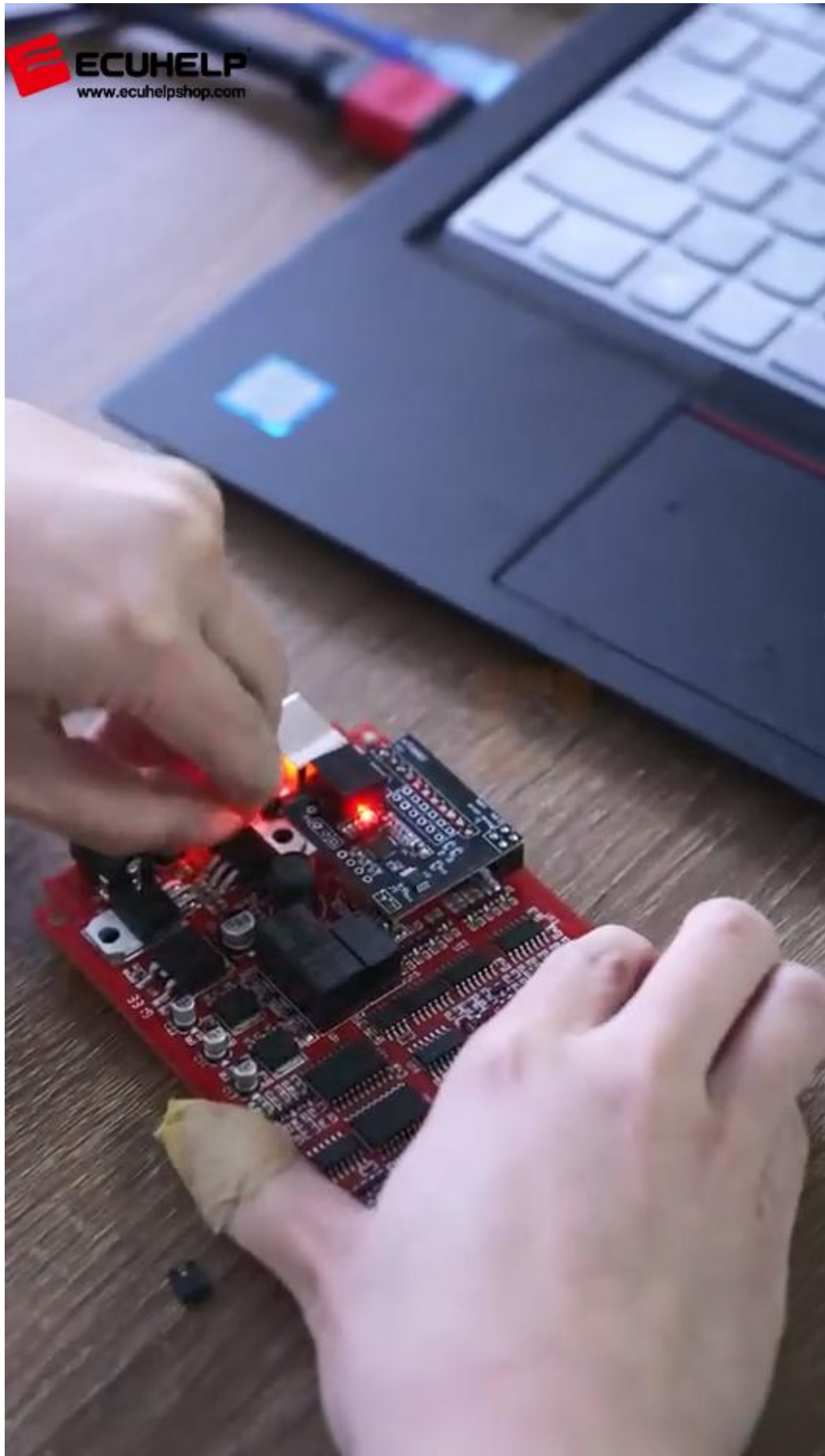
033 KB
13,064 KB
11,688 KB



**and now we have finished the this
step**

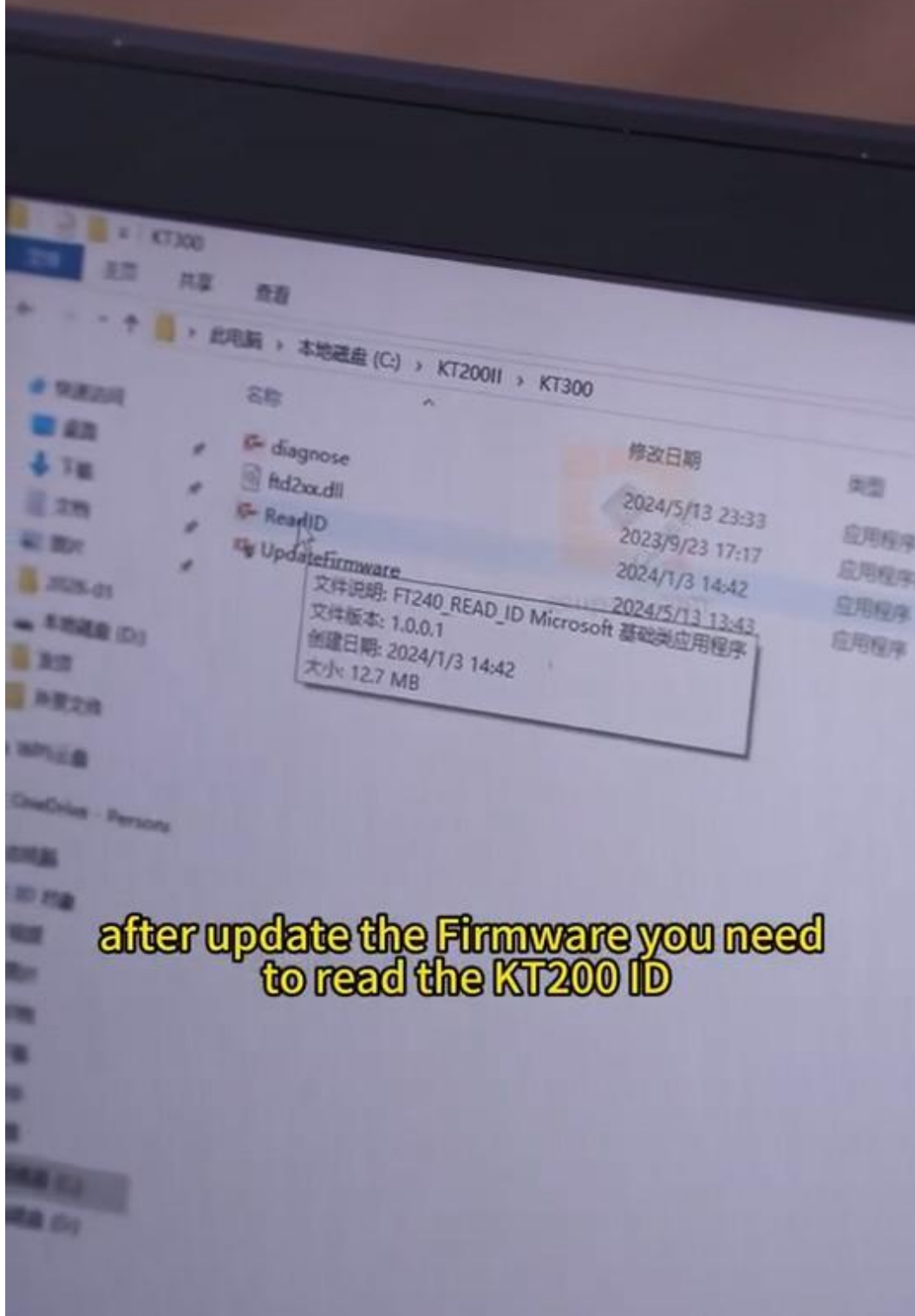
C. The final step: take out the jumper from the J1 and the JP1.







D. After updating the firmware, please read the KT200 ID by clicking on “ReadID” (Path: C disk->KT200II->KT300-ReadID), then the ID will change from kt200 ID the KT200II ID. PS: you need to send this ID to ECUHELPshop for registration or activation.



after update the Firmware you need to read the KT200 ID

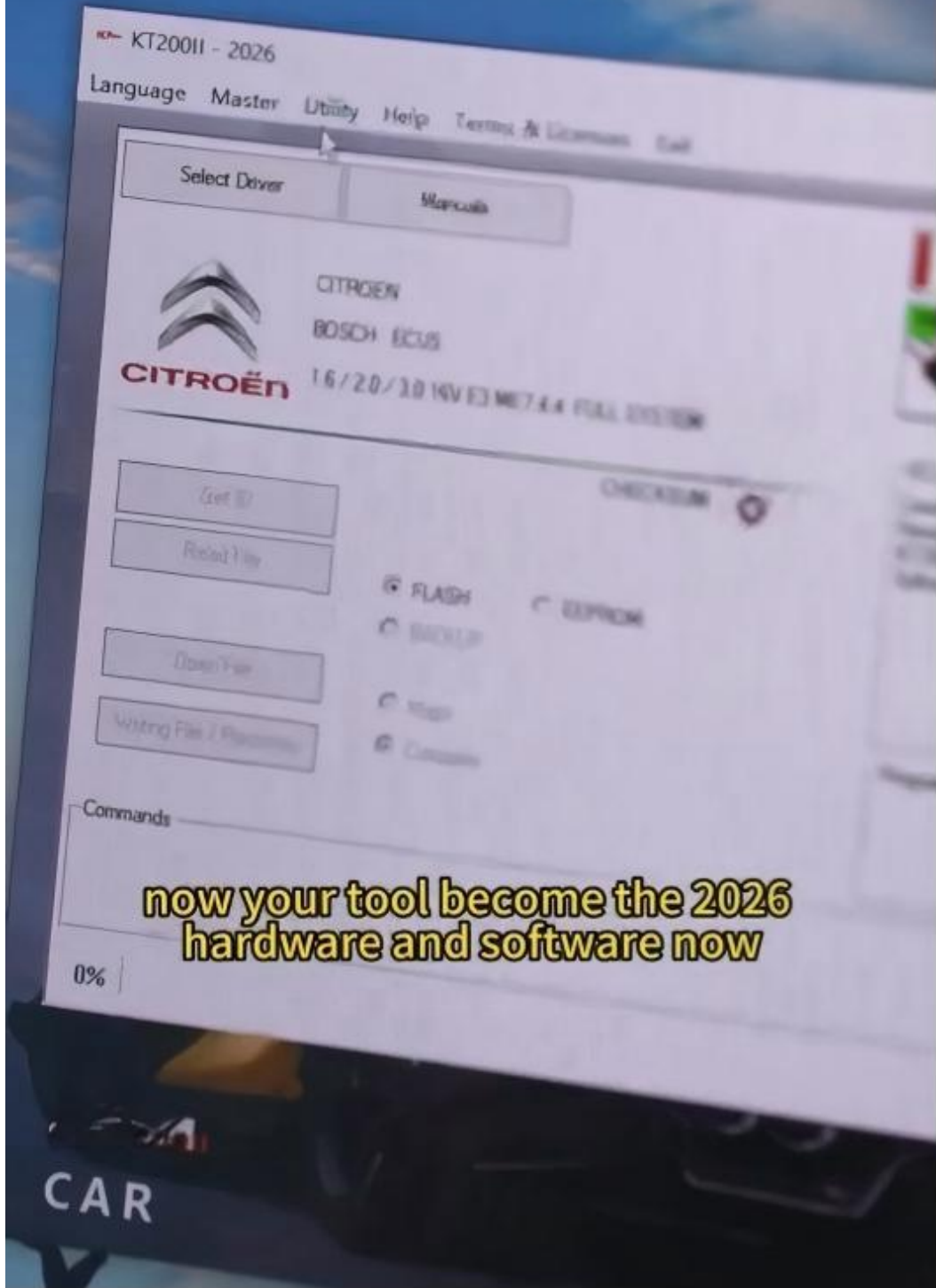
E. After activation, you open the software KT200 and will find it is kt200II 2026.

Now you upgrade the KT200II Hardware and the software.

应用程序	大小
应用程序扩展	13,540 KB
应用程序扩展	633 KB
应用程序	13,064 KB
文本文件	1 KB
应用程序	11,688 KB



or send to us for the register
or uh activate



now your tool become the 2026 hardware and software now

