



ECUHELP HTprog Quick Guide

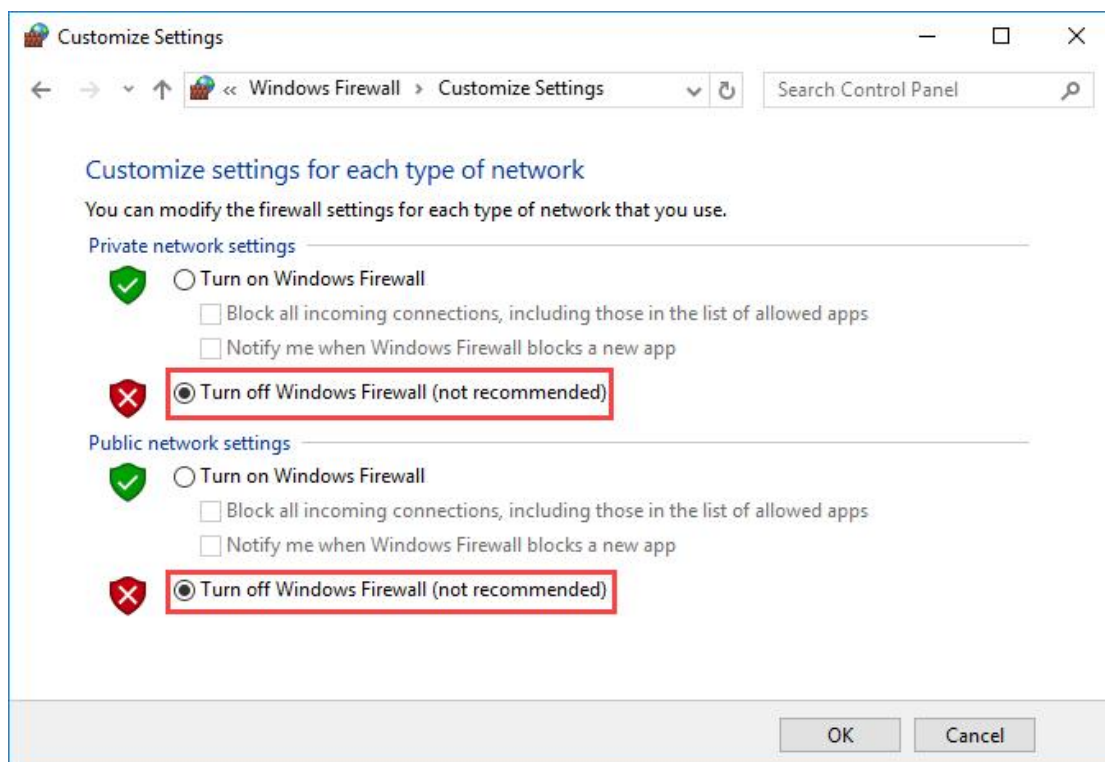
Thank you for buying ECUHELP HTprog ECU Clone Tool.

ECUHELP HTprog independent Tool is an ECU Chip tuning Tool, an on Bench Programmer, an EEPROM Programmer, a Key function tool, the package comes with clone adapter, cables and encrypted dongle, it works alone without connecting to KT200 ECU Programmer.

ECUHELP HTprog Software Download and Installation

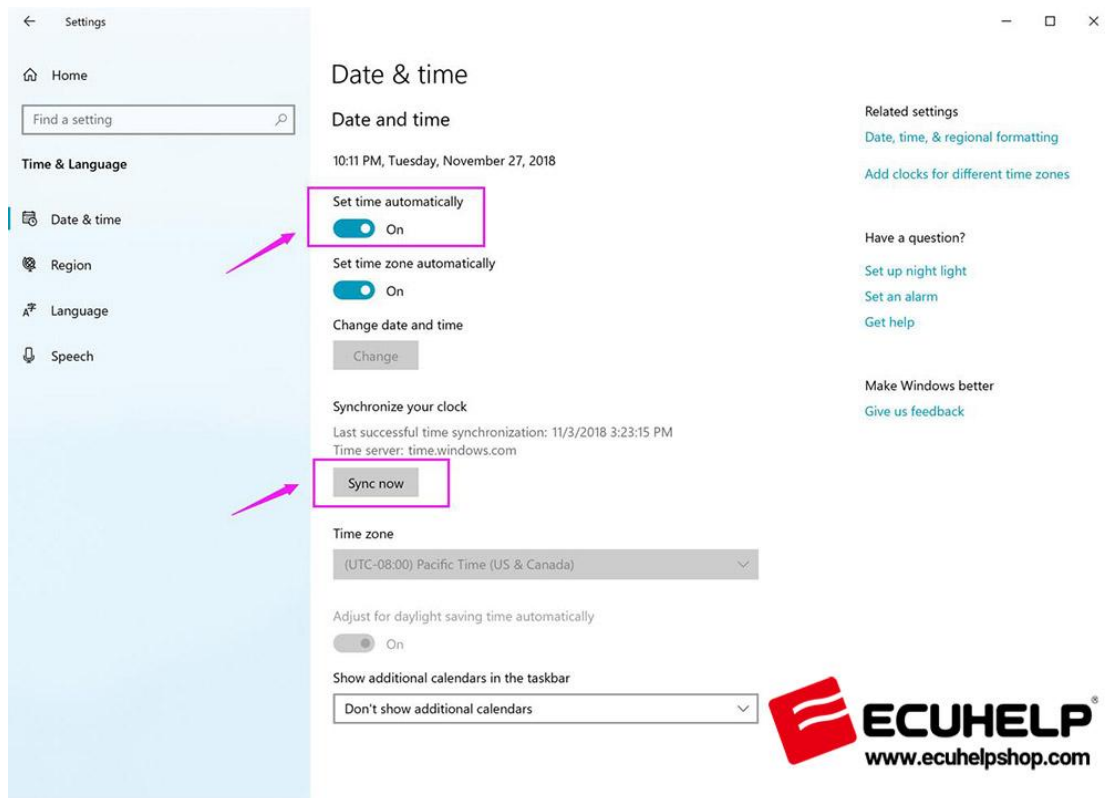
Prepare:

1. Disable the firewall and uninstall any Antivirus software to prevent potential conflicts.
Disable firewall.



2. Make sure you have a stable network connection to ensure smooth operation.

3. Set Time (Zone) Automatically and Synchronize your clock
Synchronize your clock.



Download HTprog software by browsing:

<https://www.ecuhelphelpshop.com/pages/downloads/>

Click on "HTprog software download" to download.

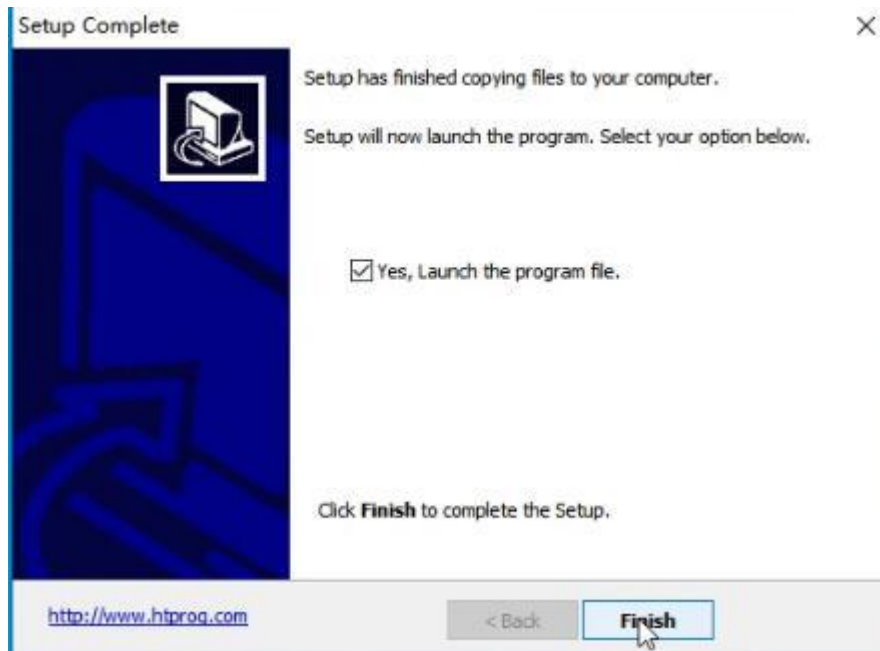
Software: 03.16

Plug HTprog and the dongle into your computer.

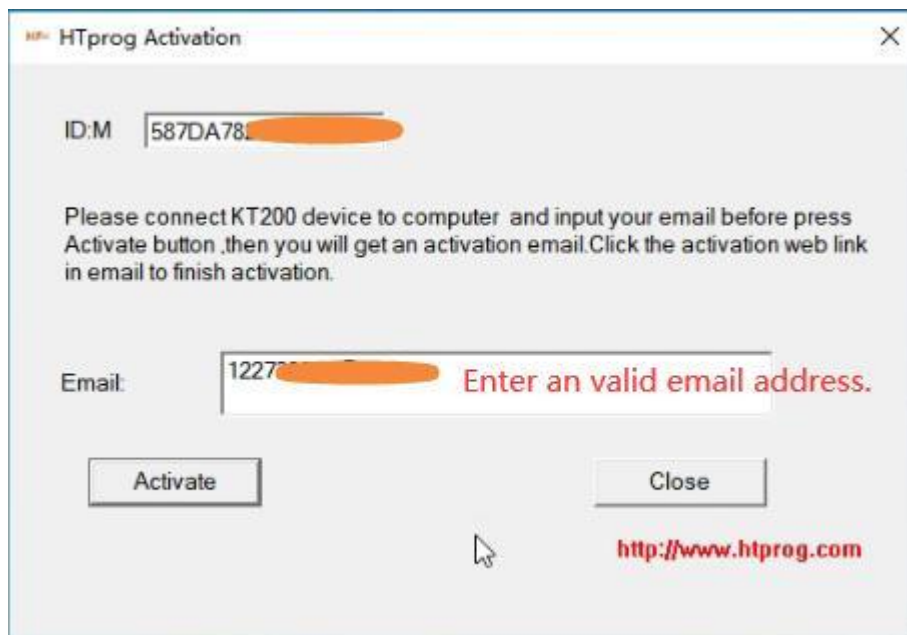
Unzip and then click on "Setup".

Click on "Next".

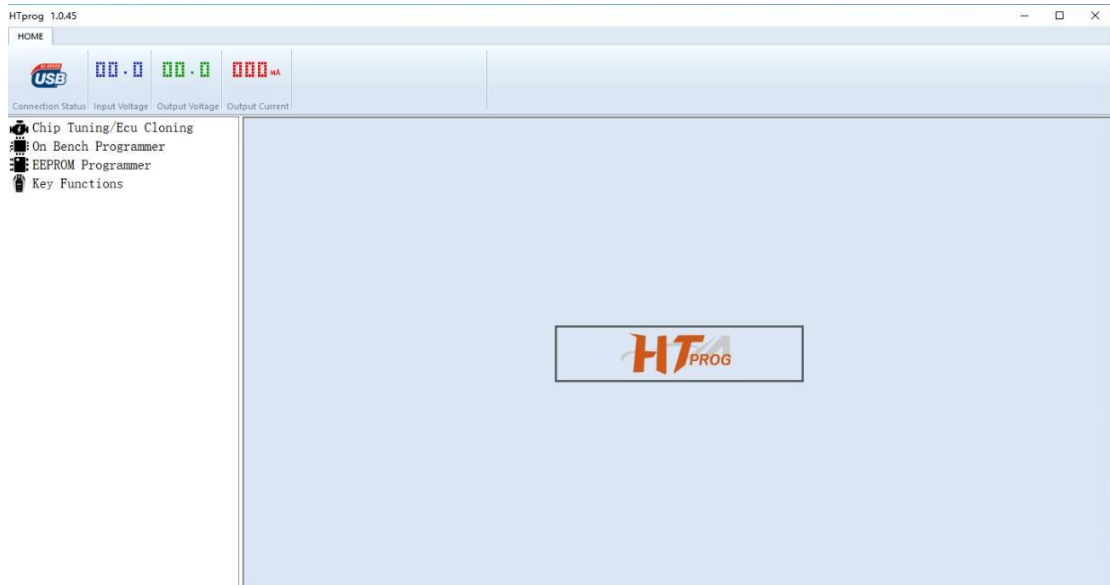
Tick "Yes, Launch the program file", then click on "Finish".



To activate HTprog, simply provide a valid email address. An email will be sent to the provided address containing an activation link. Just open the email and click the link to complete the activation process.



Launch HTprog software.



Thanks!

For service and support, please contact us.

<https://www.ecuhelpshop.com/> Email: Sales@ECUHELPshop.com WhatsApp: +8618205996549 Phone: +86-18205996549

Our Location: Mertensstraße 65, Berlin 13587, Germany

Copyright ©2023 ECUHELP SHOP LTD. All rights reserved.

